

# BRIDGING the GAP

August 2021

Colorado River BOCES  
Special Education  
Parent Newsletter

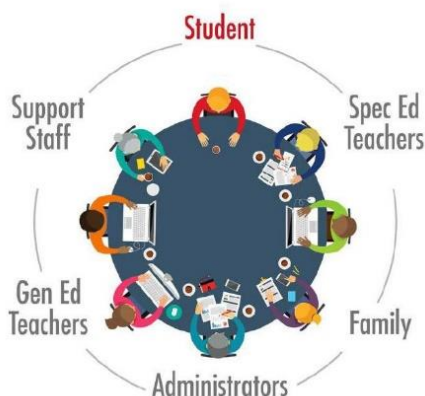
460 Stone Quarry Rd.  
Parachute, CO 81635

Hi, my name is Denise Rahe, I am the Colorado River BOCES Special Education Director. For those of you that are unfamiliar with what a BOCES is, the acronym stands for Board of Cooperative Educational Services. These agencies were originally set up by the Colorado Department of Education to provide specialized services to the rural districts within Colorado. Our BOCES is the administrative unit for the Garfield Re2 and the Garfield16 school districts. We help to provide special education support in the way of staff, materials, trainings as well as offering a checks and balance system. We are here to help districts and you, as parents, if you have questions or concerns about the special education process. The CRBOCES office is located in Parachute in the Garfield16 district office.

Denise Rahe  
Colorado River BOCES  
Special Education Director  
Garfield RE-2 Local Director  
[drahe@crboces.org](mailto:drahe@crboces.org)

Kristy Slife  
Colorado River BOCES  
Special Education Director  
Garfield School District 16 Special Ed. Director  
[kslife@crboces.org](mailto:kslife@crboces.org)

## Who's at the IEP Table



### The Student

- Provides own perspective on education experiences
- Take a leadership roll over his/her learning
- Shares interest in education & employment
- Shares strengths & areas needing support
- Shares what works

### The Parent

- Provide perspective on the student's performance
- Share info. Around physical and emotional health
- Shares what works at home

**Your Voice Matters!**  
**Get it in the Room!!**

### The Special Ed. Teacher

- Facilitate IEP
- Provides direct/indirect services to student
- Communicate progress, needs, strengths

### The General Ed. Teachers

- Provides info. regarding grade level curriculum & student development
- Provides strengths & areas of concern based on classroom performance
- Recommends accommodations that may benefit the student

**Be An Active Participant in the Meeting!!!**

### The Support Staff/Related Services

- SLPs, OTs, PTs, school nurse, counselors, mental health professionals, a school psychologist
- Explain most recent evaluation
- Provide recommendations regarding specially designed instruction
- Recommends accommodations and/or modifications

### Administration

- At times Special Ed. Director
- At times school principal
- Provides info. regarding school resources
- Explained in IDEA regulations